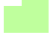



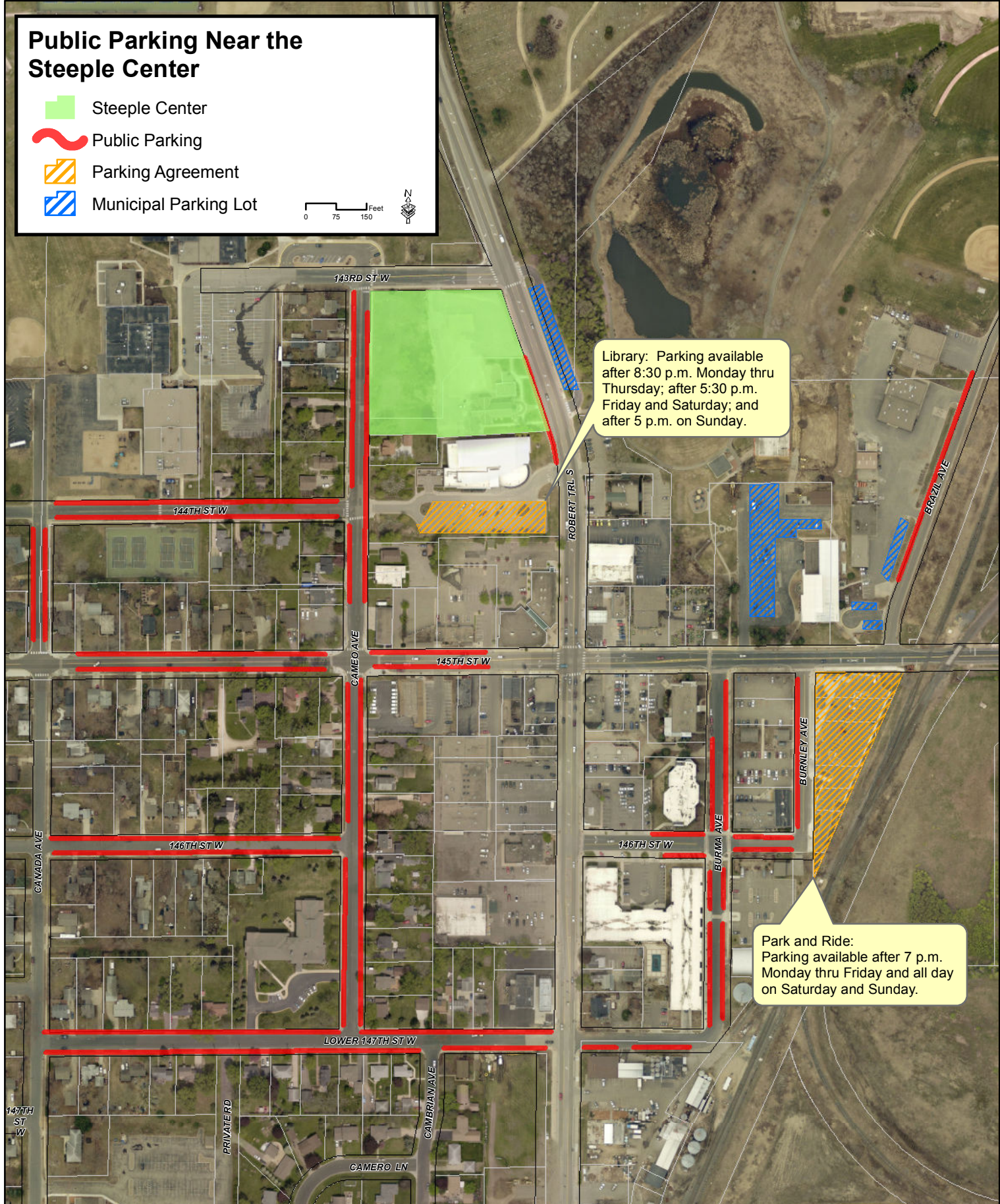


# Public Parking Near the Steeple Center

-  Steeple Center
-  Public Parking
-  Parking Agreement
-  Municipal Parking Lot



Library: Parking available after 8:30 p.m. Monday thru Thursday; after 5:30 p.m. Friday and Saturday; and after 5 p.m. on Sunday.

Park and Ride: Parking available after 7 p.m. Monday thru Friday and all day on Saturday and Sunday.



Downtown Area  
Public Parking

